

## DEAN EASEMENT

### Directions:

- \* From Route 82, take Mt. Parnassus Road east about 2 miles to Parker Road (aka Peter's Path).
- \* Turn right on Parker Road, which is unpaved.

### Option 1

- \* About halfway down Parker Road, look for a sign for Dean on your left. You can enter the property at this point.

### Option 2

- \* Drive to the end of Parker Road. There is an entrance to the trail at this point, straight ahead, where the road becomes impassable.

NOTE: Parking is limited as Parker Road is narrow and turning around could be challenging.

Report any problems during your visit to the East Haddam Land Use Office.  
860 873-5031

### Trail Facts:

- ◇ The orange trail is 2.25 miles long.
- ◇ The trail can be started at two points on Parker Road.
  - ◇ One entrance is about half-way down the road at the sign for the property on your left.
  - ◇ The other entrance is at the very end of the passable portion of Parker road.
- ◇ The terrain has moderate slopes.

NOTE: The trail is closed to the public from November 1 thru December, except on Sundays.

### Interim Trail Distances

The Dean Easement map displays interim trail distances in parentheses along the various sections of the trail.

### Permitted Activities:

- ◆ Hiking
- ◆ Nature study
- ◆ Cross-country skiing
- ◆ Snowshoeing
- ◆ Birding

No motorized vehicles are allowed on the property.



EAST HADDAM  
YOUTH AND FAMILY  
SERVICES

## EAST HADDAM TRAILS

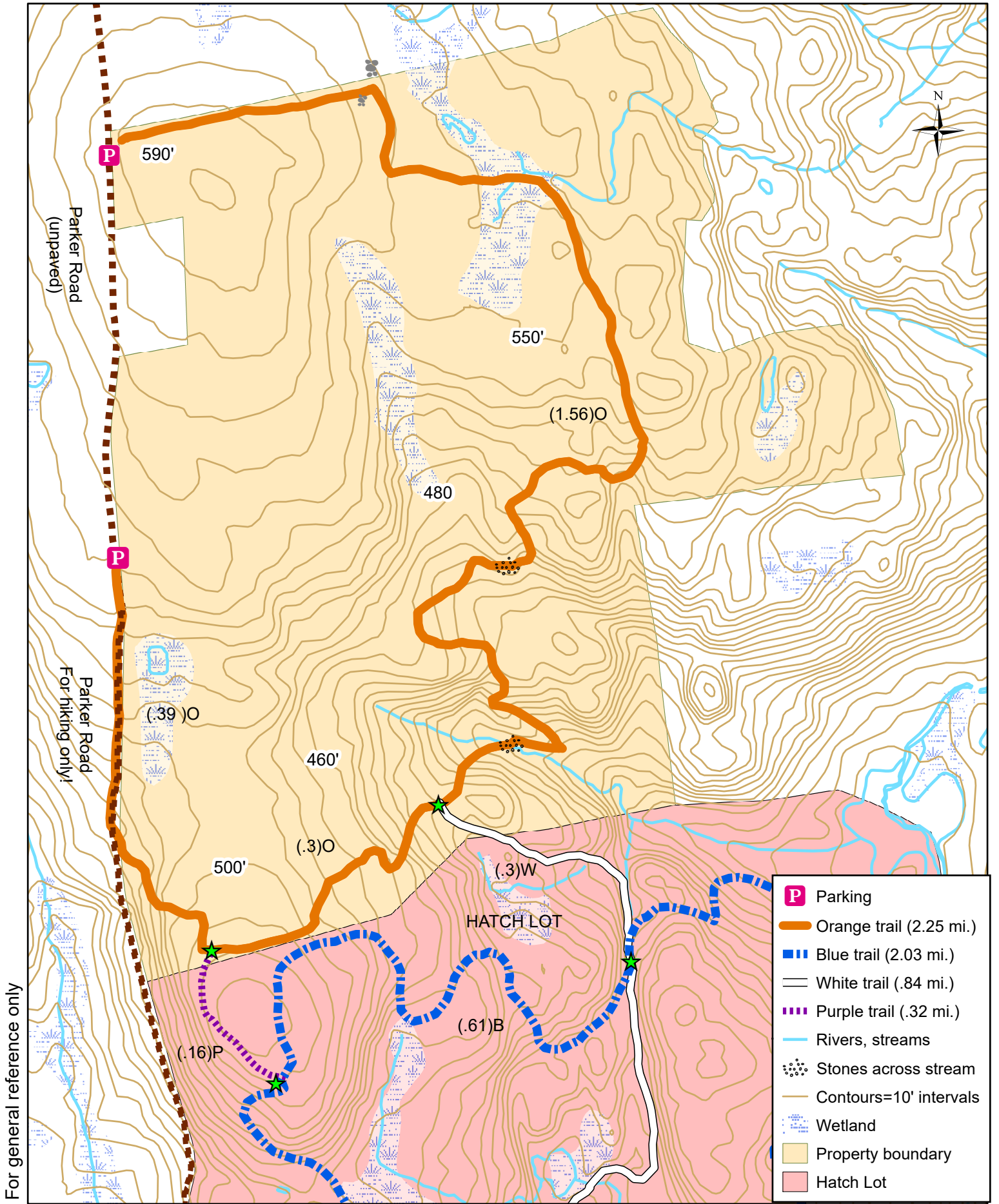
### DEAN EASEMENT

The 280-acre Dean property has a Conservation Easement with the Town of East Haddam. The easement was acquired with the assistance of a grant from the State of Connecticut. It is one of the few remaining working farms in the town. The acreage includes 70 acres of active farmland, producing hay for the farm's beef cattle, as well as additional acreage of useable agricultural land. The remaining land is forest. The property has over two miles of woodland trails open to public use. This beautiful property connects to the Hatch Lot and a planned trail will connect to the Harris Property. The trails are maintained by the East Haddam Conservation Commission.



East Haddam  
CONSERVATION  
COMMISSION

# DEAN EASEMENT



For general reference only